



Industrial

Cots

Comm

120W Industrial Quarter Brick Converters



Features	Benefits
• Standard Quarter Brick Footprint	• Assists System Integration
• 9-36, 18-36VDC Inputs	• Designed for 28V DC Networks
• Up to 91.5% Efficiency	• Easier System Thermal Management
• Up to 105°C Baseplate Temperatures	• Suitable for Conduction Cooling
• 1,500VDC Isolation (2,250VDC or 3,000VDC option)	• For Rugged Environments

Specification		GQA120						
Model		5V	12V	15V	24V	28V	48V	
Nominal Output Voltage (1)	VDC	5V	12V	15V	24V	28V	48V	
Input Voltage Range	VDC	9 - 36V					18 - 36V	
Input Current (Maximum)	A	17A					10A	
Efficiency (100% load, 24V input)	%	90%	89%	89%	87%	89%	91.5%	
Output Voltage Adjustment	VDC	4.5 - 5.5V	10.8 - 13.2V	13.5 - 16.5V	21.6 - 26.4V	25.2 - 30.8V	45.6 - 52.8V	
Ripple & Noise (max) pk-pk	mV	150mV	180mV	200mV	250mV	250mV	300mV	
Line Regulation (typ)	%	0.05%	0.05%	0.05%	0.05%	0.05%	0.05%	
Load Regulation (max)	%	0.03%	0.03%	0.03%	0.03%	0.03%	0.03%	
Overcurrent Protection (typ)	A	37A	14.5A	12A	6.2A	5.1A	4A	
Overvoltage Protection (typ)	V	6.5V	15V	18V	32V	35V	54V	
Remote On/Off	-	Yes; Low = ON, Open = OFF						
Remote Sense	-	Yes			Not as standard			
Operating Temperature	°C	-40°C to +105°C						
Storage Temperature	°C	-55°C to +125°C						
Temperature regulation	%	0.5% across full temperature range						
Cooling	-	Conduction, convection or forced air						
Withstand Voltage	VDC	Input to Output 1,500VDC (-NP7 suffix: 2,250VDC, -OP7 suffix: 3,000VDC), Baseplate to Input or Output 1,500VDC. (-NP7 & -OP7 suffix: 2,250VDC)						
Isolation Resistance	MΩ	>10MΩ						
Safety Agency Certifications	-	UL60950-1, CSA60950-1, EN60950-1, CE Mark						
Weight (Typ)	g	85g (Flanged baseplate, open frame)						
Size (LxWxH)	mm	Flanged version: 60.6 x 49.5 x 12.7 Non-flanged version: 60.6 x 39.5 x 12.7						
Warranty	yrs	3						

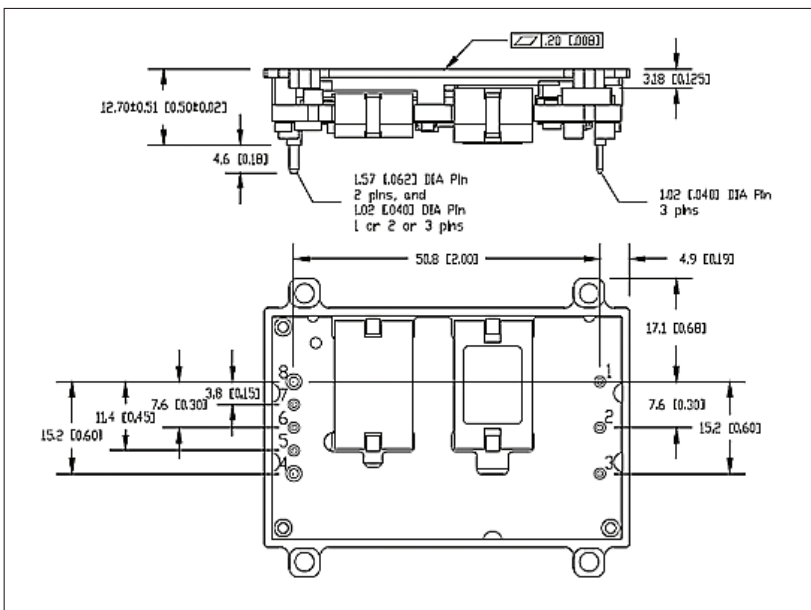
Notes: See Installation Manual for full details, test methods of parameters and application notes

(1) Up to 50V input transient for 1 second

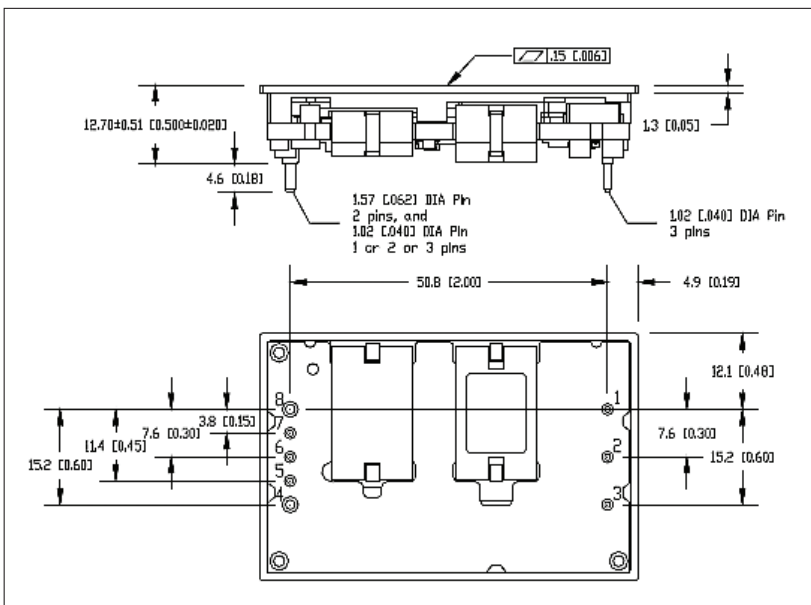
Model Selector

Model	Input Voltage (V)	Output Voltage (V)	Maximum Current (A)	Maximum Power (W)
GQA2W024A050V-007-R	9 - 36	5	24	120
GQA2W010A120V-007-R	9 - 36	12	10	120
GQA2W008A150V-007-R	9 - 36	15	8	120
GQA2W005A240V-007-R	9 - 36	24	5	120
GQA2W004A280V-007-R	9 - 36	28	4.28	120
GQA24003A480V-007-R	18 - 36	48	2.5	120

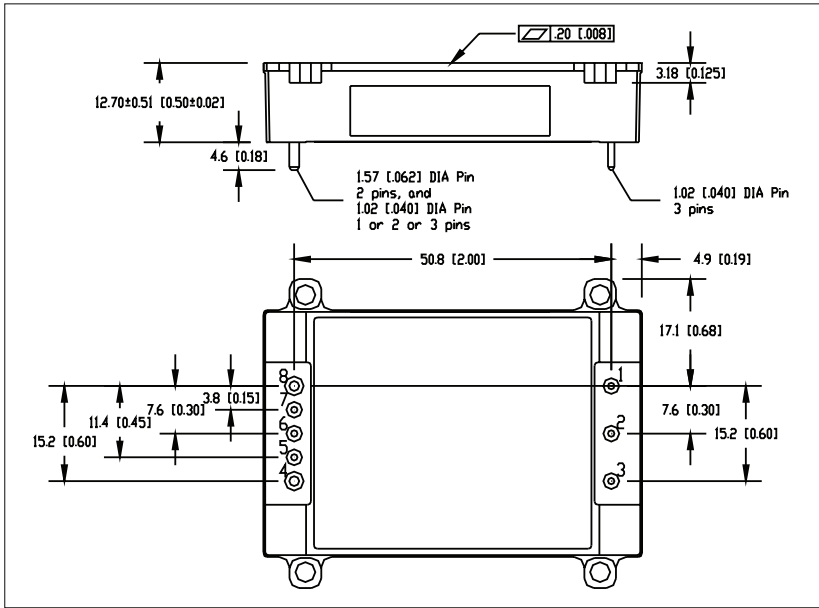
Flange Baseplate, Open Frame GQA120 Series



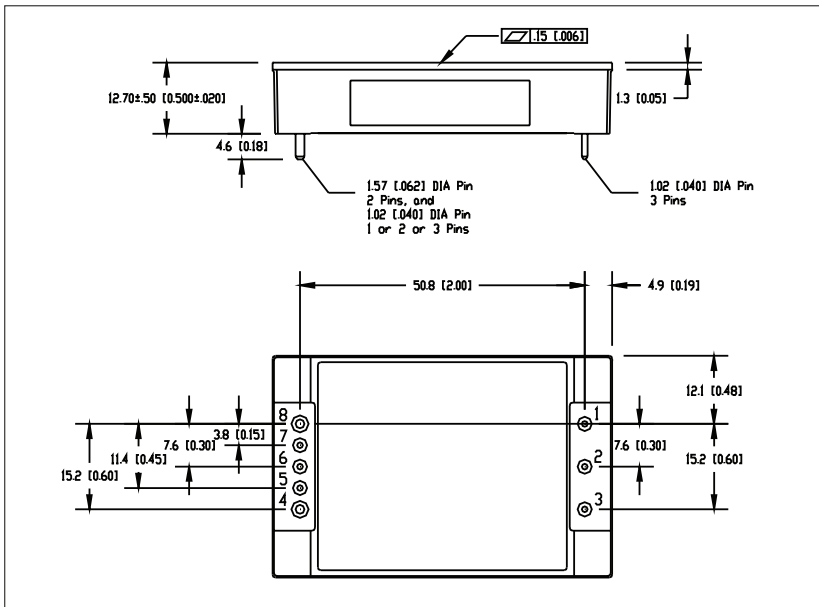
Non-Flange Baseplate, Open Frame GQA120 Series



With Flange, Potted GQA120 Series



No Flange, Potted GQA120 Series



Options	
Suffix	Description
-007-R	Flanged Baseplate, Open Frame
-N07-R	Non-Flanged Baseplate, Open Frame
-0P7-R	Flanged Baseplate, Enclosed with Potting, 3kV Input to Output Isolation
-NP7-R	Non-Flanged Baseplate, Enclosed with Potting

Standard Model Notes: *Contact factory for other Voltages or option codes

Pin Assignment	
PIN	Function
1	Vin (+)
2	On / Off
3	Vin (-)
4	Vo (-)
5	Sense (-), select models
6	Trim
7	Sense (+), select models
8	Vo (+)



TDK-Lambda France SAS

3 Avenue du Canada
Parc Technopolis
Bâtiment Sigma
91940 les Ulis
France
Tel: +33 1 60 12 71 65
Fax: +33 1 60 12 71 66
france@fr.tdk-lambda.com
www.fr.tdk-lambda.com



Italy Sales Office

Via dei Lavoratori 128/130
20092 Cinisello Balsamo (MI)
Italy
Tel: +39 02 61 29 38 63
Fax: +39 02 61 29 09 00
info.italia@it.tdk-lambda.com
www.it.tdk-lambda.com



Netherlands

info@nl.tdk-lambda.com
www.nl.tdk-lambda.com



TDK-Lambda Germany GmbH

Karl-Bold-Strasse 40
77855 Achern
Germany
Tel: +49 7841 666 0
Fax: +49 7841 5000
info.germany@de.tdk-lambda.com
www.de.tdk-lambda.com



Austria Sales Office

Aredstrasse 22
2544 Leobersdorf
Austria
Tel: +43 2256 655 84
Fax: +43 2256 645 12
info@at.tdk-lambda.com
www.de.tdk-lambda.com



Switzerland Sales Office

Bahnhofstrasse 50
8305 Dietlikon
Switzerland
Tel: +41 44 850 53 53
Fax: +41 44 850 53 50
info@ch.tdk-lambda.com
www.de.tdk-lambda.com



Nordic Sales Office

Haderslevvej 36B
DK-6000 Kolding
Denmark
Tel: +45 2911 9556
info@dk.tdk-lambda.com



TDK-Lambda UK Ltd.

Kingsley Avenue
Ilfracombe
Devon EX34 8ES
United Kingdom
Tel: +44 (0) 12 71 85 66 66
Fax: +44 (0) 12 71 86 48 94
powersolutions@uk.tdk-lambda.com
www.uk.tdk-lambda.com



TDK-Lambda Ltd.

Kibbutz
Givat Hashlosha 48800
Israel
Tel: +9 723 902 4333
Fax: +9 723 902 4777
info@tdk-lambda.co.il
www.tdk-lambda.co.il



C.I.S.

Commercial Support:
Tel: +7 (495) 665 2627
Technical Support:
Tel: +7 (812) 658 0463
info@tdk-lambda.ru
www.tdk-lambda.ru

Local Distribution